



# INDOFINE Chemical Company, Inc.

121 Stryker Lane, Bldg. 30, Suite 1 • Hillsborough, NJ 08844 • U.S.A.

Phone: (908) 359-6778 • FAX: (908) 359-1179

website: [www.indofinechemical.com](http://www.indofinechemical.com)

e-mail: [chemical@indofinechemical.com](mailto:chemical@indofinechemical.com)

## CERTIFICATE OF ANALYSIS

Catalog Number: 06-595

Product Name: **GALLOCATECHIN GALLATE**

CAS Number: [4233-96-9]

Lot Number: 2010481

Chemical Formula: C<sub>22</sub>H<sub>18</sub>O<sub>11</sub>

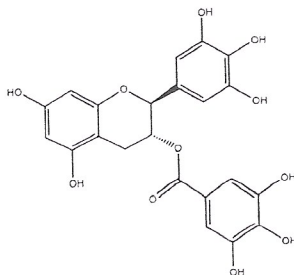
Molecular Weight: 458.37

Appearance: Off-white powder

Water Content: 1.62%

Storage: Store in a cool, dry place

Purity(HPLC): 99.43%



Prepared by:  
*Ramesh Mandadi*  
Ramesh Mandadi  
Director of Operations

Reviewed and Approved by:  
*Sujata Moton*  
Sujata Moton  
VP



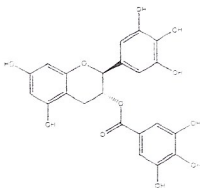
# INDOFINE Chemical Company, Inc.

121 Stryker Lane, Bldg. 30, Suite 1 • Hillsborough, NJ 08844 • U.S.A.

Phone: (908) 359-6778 • FAX: (908) 359-1179

website: [www.indofinechemical.com](http://www.indofinechemical.com)

e-mail: [chemical@indofinechemical.com](mailto:chemical@indofinechemical.com)



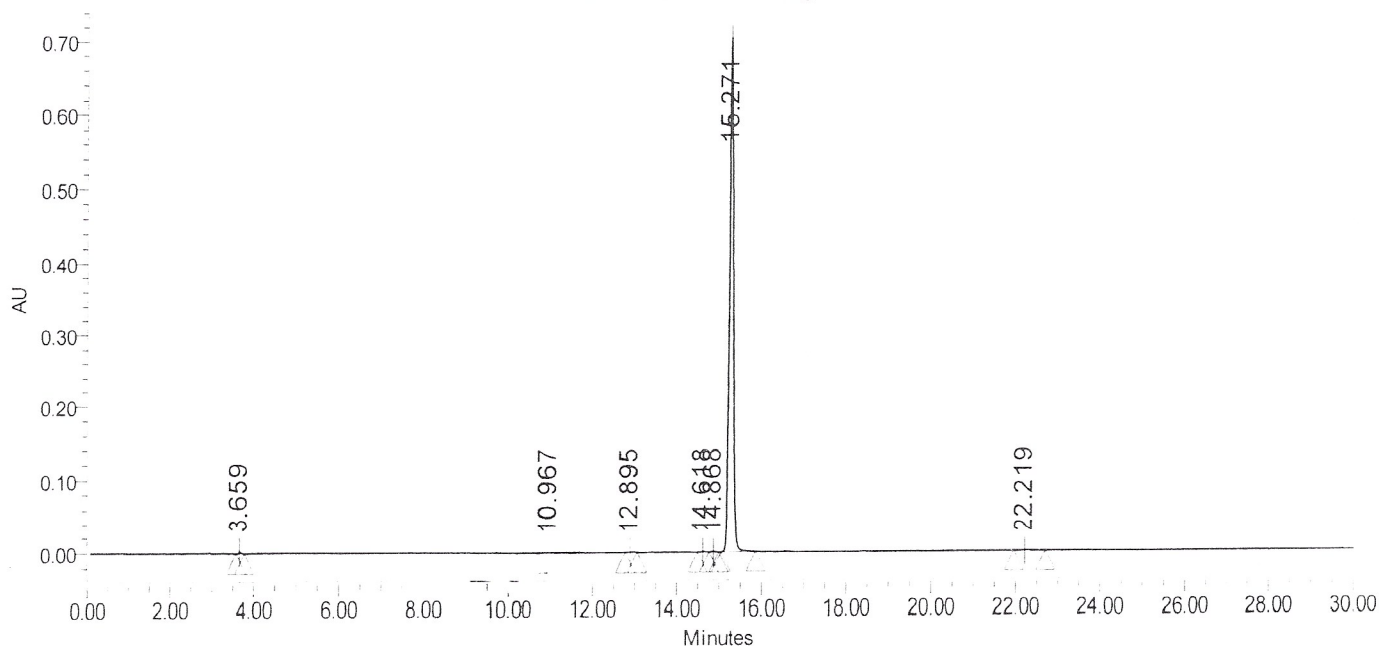
## HPLC ANALYSIS

Catalog No.: 06-595  
Product Name: Gallocatechin Gallate  
Lot No.: 2010481

### SAMPLE INFORMATION

Sample Name:	Gallocatechin gallate	Acquired By:	PRF01
Sample Type:	Unknown	Sample Set Name	
Vial:	33	Acq. Method Set:	Gallocatechin gallate
Injection #:	1	Processing Method	sample
Injection Volume:	10.00 ul	Channel Name:	PDA Ch1 275nm@4.8nm
Run Time:	30.0 Minutes	Proc. Chnl. Descr.:	PDA Ch1 275nm@4.8nm

Auto-Scaled Chromatogram



### Peak Results

Name	RT	Area	% Area	Height (µV)	USP Plate Count	USP Resolution
1	3.659	9243	0.20	2818	29498.65	
2	10.967	4584	0.10	263	8300.23	23.57
3	12.895	3237	0.07	480	77611.99	5.41
4	14.618	3266	0.07	516	130707.54	9.47
5	14.868	2939	0.06	506	169678.67	1.44
6	15.271	4700364	99.43	706160	123537.81	2.35
7	22.219	3771	0.08	296	77858.51	28.11